

RPM Tips & Tricks:

Audience Lot View Screen: Slide Show Extraordinaire!

Background

AuctionRPM's Audience Lot View Screen ("ALV") is a handy method of projecting auction lot information, including pictures, during the actual auction. If more than one picture is present, images are rotated for a predetermined amount of time (thus, the 'slide show').

ALV may be controlled automatically (or manually) from 'Pre Lotted Auctions – Bid Entry' and 'Auctioneer – Active' screens. It may also be operated manually from the ALV computer (in 'Independent Mode'). Each method will be demonstrated in section 3, below.

Path: Auctions – Day of Auction tab – Audience Lot View

There are three main ALV modes, namely...

1. Quarter Screen Picture Mode: Projects lot number and lot-associated images in the upper ¼ of the screen. Optionally, lot information (short and/or long descriptions) may be displayed.
2. Three Quarter Screen Picture Mode: Three-fourths of the screen is used for lot-associated images. The lot number is displayed along with any images.
3. Full Screen Picture Mode: The entire screen is devoted to lot-associated images. No lot number or description is shown.

Screen examples:

Quarter Screen Picture Mode



Three Quarter Screen Picture Mode



Full Screen Picture Mode



Audience Lot View activities require an additional computer that is connected, via network, to the AuctionRPM database. As it must have continuous access to the RPM database, an additional user license may be required. If the auction house has purchased a 3-user license and has three (3) simultaneous database users (perhaps a clerk, cashier and registrar) and wishes to make use of ALV, they would want to add a fourth user license to accommodate the ALV.

RPM Tips & Tricks:

Audience Lot View Screen: Slide Show Extraordinaire!

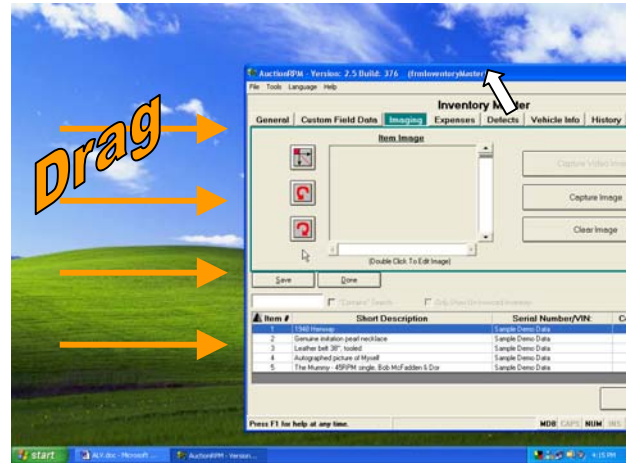
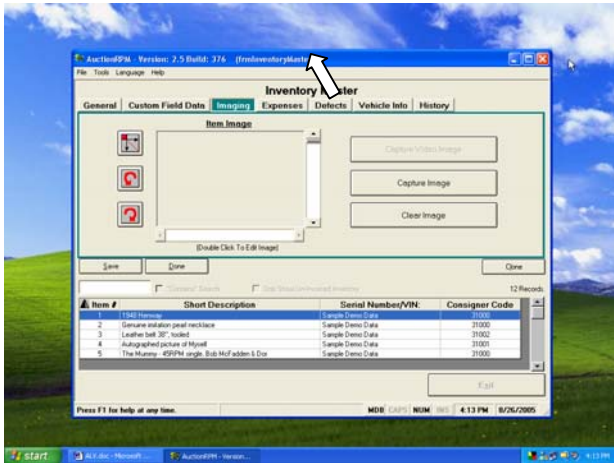
1. Associating Images with Inventory:

Method 1: During Inventory Entry (using 'drag and drop')

Path: Auctions – Preparation tab – Inventory Master - Imaging

When adding inventory directly into Inventory Master, drag the AuctionRPM screen towards one side of the screen or another (illustrated: to the right). Next, start Windows Explorer, find and display the Image Files. Click on the 'Restore Down' button. Then, drag Windows Explorer to the opposite side of the screen (illustrated: to the left).

- Start AuctionRPM. Click on 'Auctions – Preparation tab – Inventory Master – (select or add an item) – Imaging tab'.
- Move RPM screen towards the right using the following procedure:
 - Left-Click and hold down button while pointing to the top of the RPM blue 'frame'.
 - Drag the RPM frame towards the right-hand side of the screen.

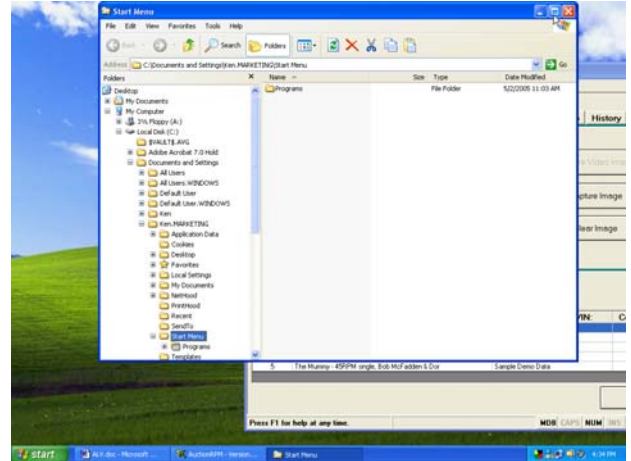


- Right-click on 'Start'. Left-click on 'Explore'.
- Find your images in the Windows Explorer. They may be either in Icon or Detail form.
- Find the 'Maximize/Restore-Down' button (between 'Minimize' and 'Exit'). If it shows a 'double window' and says 'Restore-Down' when pointed to, click once. If a 'single-window' shows, it is already in 'Restore-Down' mode.

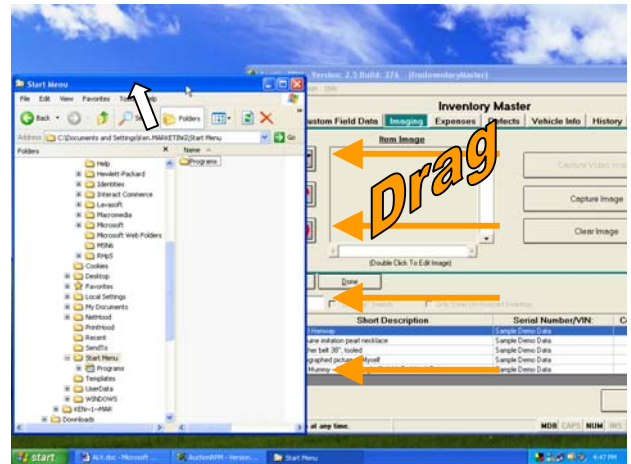
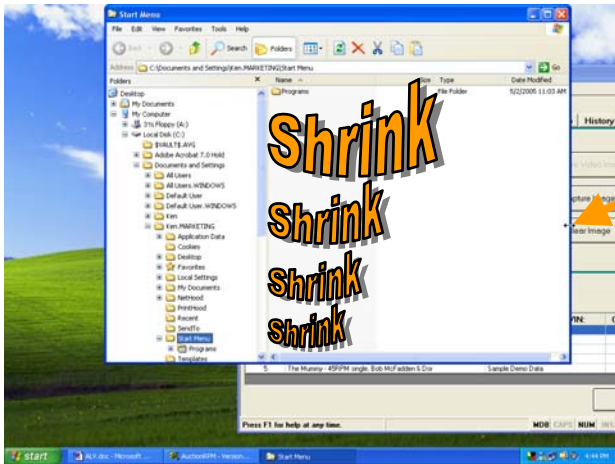
RPM Tips & Tricks:

Audience Lot View Screen: Slide Show Extraordinaire!

'Maximize/Restore-Down' Button



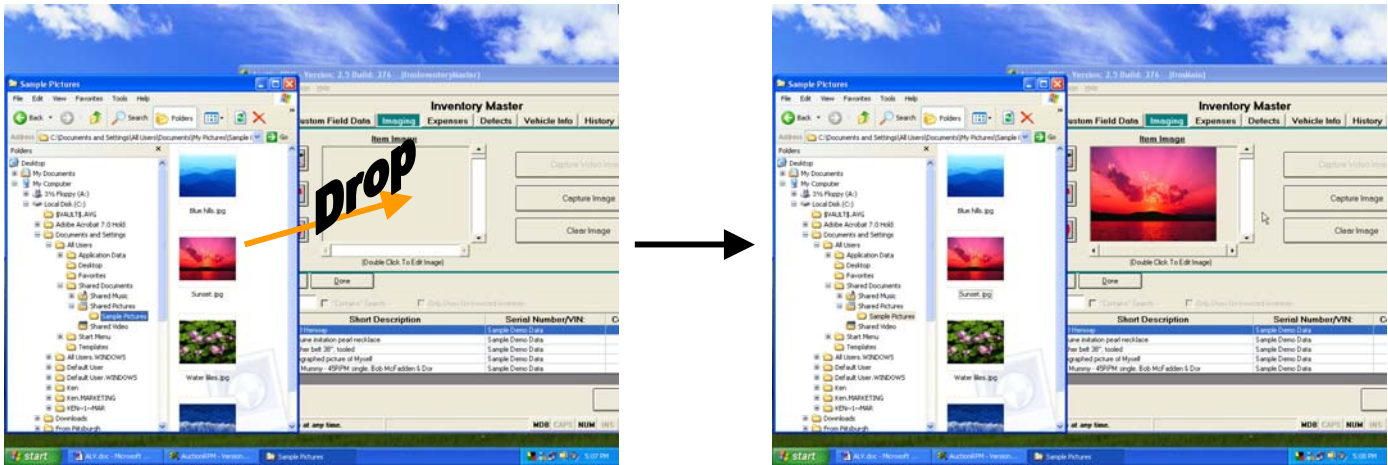
- As needed, shrink Windows Explorer 'frame'. Point at bottom or side of the frame until the white cursor becomes a double-pointed arrow. Hold down the left mouse button and push towards the inside of the frame. The Windows Explorer frame will shrink.
- Move Windows Explorer 'frame' towards the left-hand side of the screen (point to top of frame, hold the left mouse button down, and drag the frame towards the left)



RPM Tips & Tricks:

Audience Lot View Screen: Slide Show Extraordinaire!

- Left-click and drag the icon or file name onto RPM Imaging window. Drop the image into RPM.



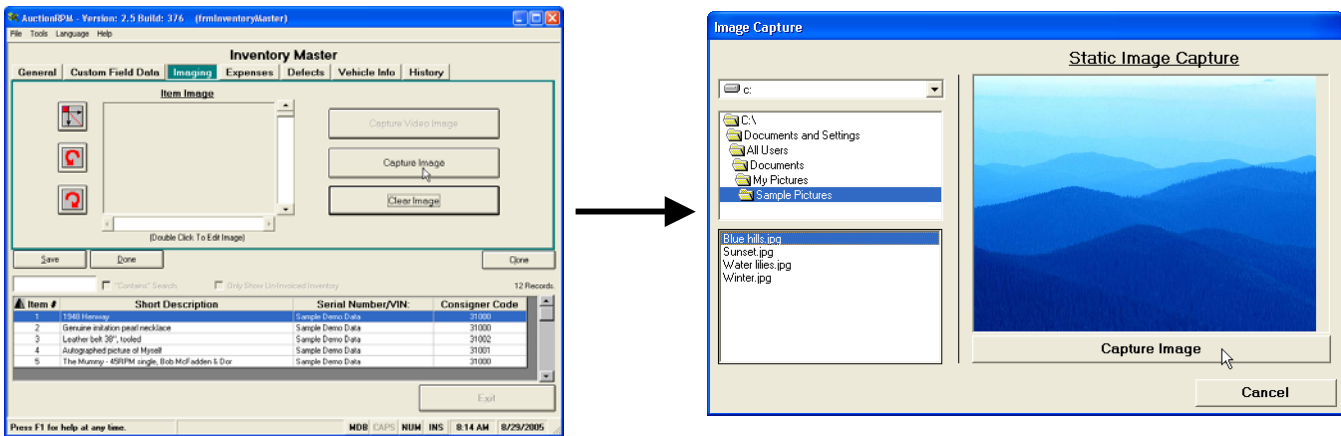
Notes: Multiple images may be selected using 'SHIFT-Select' or 'CTRL-Select' methods (as described in Method 6 ('To add one or more image to an auction lot'), below.

If displeased with one or more item images: Display the image. Click 'Clear Image' button.

The three Image Control buttons (left side of 'Item Image' box) are explained in Method 6, below.

Method 2: During Inventory Entry (using 'Capture Image')

- Click on 'Capture Image'.
- Using the left side of screen, double-click on folder icons until the folder containing the images is found. Image file names will appear in the bottom pane.
- Highlight a file name; the image displays in the right-hand window.
- Click on 'Capture Image'.
- Done deal.



RPM Tips & Tricks:

Audience Lot View Screen: Slide Show Extraordinaire!

Notes: Multiple images may be selected using 'SHIFT-Select' or 'CTRL-Select' methods.

If displeased with one or more item images: Display the image. Click 'Clear Image' button.

The three Image Control buttons (left side of 'Item Image' box) are explained in Method 6, below.

Method 3: During Inventory Entry (using 'Capture Video Image')

Prerequisite: Assure that a PC-camera ('Web camera') is attached to the computer, and is already operational.

When the PC-camera is correctly attached and initialized, Inventory Master 'Capture Video Image' button is available for use (not grayed out). See the above section for location of 'Capture Video Image' button (it is the grayed out button).

Whatever the camera 'sees' will be shown in the 'Item Image' box. When satisfied with the image, click 'Capture Image'. Multiple images may be associated with the item.

Notes: If displeased with one or more item images: Display the image. Click 'Clear Image' button.

The three Image Control buttons (left side of 'Item Image' box) are explained in Method 6, below.

Method 4: During the Add/Edit Lots Process, Adding Items

Path: Auctions – Preparation tab – Add/Edit Lots – 'Add New Item To Current Lot Number'

Click on 'Add New Item To Current Lot Number' (near center of screen). The Add function then places the user directly into the Inventory Master table. To add or manipulate images, please use any one of Methods 1, 2, or 3, above.

Method 5: During the Add/Edit Lots Process, Editing Items

Path: Auctions – Preparation tab – Add/Edit Lots – (select lot) – 'Edit Lot'

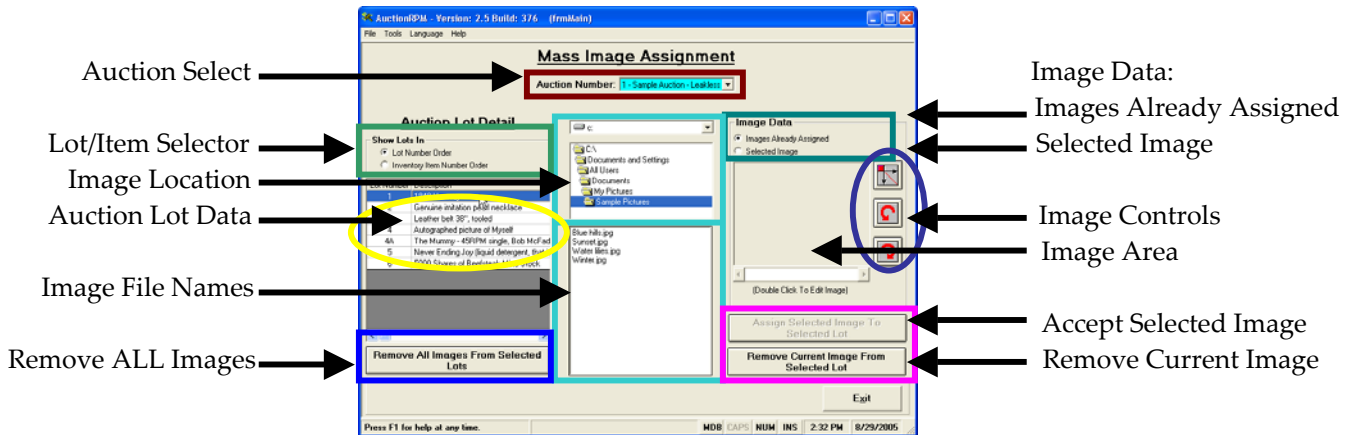
From the 'Items in This Auction' pane (right side of 'Add/Edit Lots' screen), highlight the affected lot. Click 'Edit Lot'. The Edit function then places the user directly into the Inventory Master table. To add or manipulate images, please use any one of Methods 1, 2, or 3, above.

RPM Tips & Tricks:

Audience Lot View Screen: Slide Show Extraordinaire!

Method 6: After the Auction is lotted (using 'Mass Image Assignment')

Path: Tools – General tab – Mass Image Assignment



When the auction is partially or completely lotted, Mass Image Assignment may be the fastest way to associate images with Auction Lots. Here's a tour of the screen:

1. Center of screen:
 - Auction Select: Select the auction of interest.
 - Image Location: Using the mouse, click until image folder is visible and Image File Names are shown.
2. Screen Left:
 - Lot/Item Selector: Show Auction data in either Lot Number or Inventory Item Order.
 - Auction Lot Data: Data for the selected auction, ordered by Lot or Inventory Item Number.
 - Remove ALL Images: For the highlighted lot in Auction Data, strip out any and all images.
3. Screen Right:
 - Image Data #1 – Images Already Selected: For the highlighted lot in Auction Lot Data, display all associated images. Example: If (Auction Data) Lot #345 is highlighted, any associated images will display in the Image Area.
 - Image Data #2 – Selected Image: For the highlighted Image File Name (center screen), display the image.
 - Image Controls: For the selected image, the top button enlarges the image for easier viewing (and more detail). The bottom two buttons rotate the image 90 degrees, either clockwise or counterclockwise.
 - Image Area: Displays images, depending on the setting of "Image Data". If Image Data is set to 'Images Already Selected', images already associated with the highlighted Auction Lot are shown. If 'Selected Image' is chosen, the highlighted Image File Name is shown.
 - Accept Selected Image: After highlighting an Image File Name (which displays the image in the Image Area), this option is available. Click the button to associate the Selected Image with the highlighted Auction Lot.

RPM Tips & Tricks:

Audience Lot View Screen: Slide Show Extraordinaire!

- Remove Current Image: After highlighting an Auction Lot (and clicking on 'Selected Image'), this option is available. Click to disassociate the currently displayed image from the selected Auction Lot.

How to Use Mass Image Assignment Screen

- Using 'Auction Select', click on the desired auction. Auction lots will show in Auction Lot Data.
- Using 'Image Location', click in the displayed folders to point to the image file location. Image File Names will appear in the lower pane of this screen.

To see images already associated with a particular Auction Lot:

On 'screen left', highlight (select) the auction lot. On 'screen right', click 'Images Already Assigned'. Any images associated with the lot will be displayed, one at a time. To see more than the first image, slide the Image Area slider bar to the right (or click on the right-hand slider bar arrow).

To remove an image from an auction lot:

Display the unwanted image. Click on 'Remove Current Image'. The balance of images, if any, will remain.

To remove all images from an auction lot:

Highlight the auction lot of interest. Click 'Remove All Images From Selected Lot'. Answer 'yes'. Done deal.

To add one or more images to an auction lot:

Select the appropriate lot number (Auction Lot). Select an image file name. Be sure that the Image Selector is set to 'Selected Image'. Click 'Accept Selected Image'. Done deal.

Note: For multiple images, use one of the following:

CTRL-Select: (while holding down <CTRL> key, click on Image File Names one at a time. Files are selected (or deselected) with each mouse click.

SHIFT-Select: (click on the first Image File Name, hold down the <SHIFT> key, click on the last file name. All files in between are selected.

To rotate an image by 90 degrees:

Highlight the affected image. Click either of the Rotation Buttons in the Image Control Area.

To show an enlargement of the image:

Highlight the affected image. Click the top Image Control button. Click 'Return' to close the enlargement screen.

RPM Tips & Tricks:

Audience Lot View Screen: Slide Show Extraordinaire!

2. Audience Lot View: Settings

Path: Tools – General tab – Settings and Defaults – Imaging

Audience Lot View Text Color: Click on the button and select from a myriad of colors. Remember that the background is black, so a lighter color would be in order.

Audience Lot View Description Options: Choose from Short Description Only, Long Description Only, or Both Short and Long Descriptions.

Slide Show Speed (in seconds): This setting controls how long each image will be shown. Select a short period of time, such as 4 or 5 seconds.

Show Appraisal Value on ALV: A check in this box will display the 'Appraisal' value that comes from Inventory Master record (Auctions – Preparation tab – Inventory Master – Appraisal Value).

3. Audience Lot View: Showing of the Lots

The computer used for ALV must be networked to the AuctionRPM database. To begin, start AuctionRPM on the ALV computer. Go to 'Auctions – Day of Auction tab – Audience Lot View'. For illustrations of ALV options, please see the 'Background' section at the beginning of this document.

When ALV is started, it runs in 'automatic' mode. That is, it is controlled by either of two screens: 'Auctions – Day of Auction tab – Pre Lotted Auction – Bid Entry' or 'Auctions – Day of Auction tab – Auctioneer Active'. See sections 3a and 3b, below.

Caution: Do not attempt to simultaneously manipulate ALV using both of the above-mentioned screens. Conflicts may arise and freeze ALV and/or AuctionRPM.

ALV may also be run in Independent (manual) mode. An operator sits at the ALV computer and manually changes the displayed lot information. See section 3c, below.

3a. ALV: Automatic Mode, Controlled From Pre-Lotted Bid Entry Screen

Path: Auctions – Day of Auction tab – Pre Lotted Auction – Bid Entry

RPM Tips & Tricks:

Audience Lot View Screen: Slide Show Extraordinaire!

Day Of Auction - Bid Entry

Auction Number: 1 - Sample Auction - Leakless Waterwo

Lot Number	Description	Consignor	Quantity	Bid Amount	Bidder
1	1948 Herway		1		
	Genuine imitation pearl necklace	1	1		
3	Leather belt 38", tooled	3	1		
4	Autographed picture of Myself	2	1		
4A	The Mummy - 45RPM single, Bob	1	1	With Lot #: 1	
5	Never Ending Joy (liquid detergent)	3	1		
6	1000 reserve - sell 800	1	1		
7	1000 reserve - 1000 sell	1	1		
8	1000 reserve - 1200 sell	1	1		

Bid Quick Entry

Lot Number: [] QTY: [] Amount: [] Bidder Number: []

Buttons: Split Lot, Combine Lots, Clone Lot, Clear Bid, Add New Lot, Print Winning Bid Receipt, Auction Total, Current Lot Number: Pre-Auction, Master: Off, Pre-Auction, StandBy, Exit

Button - 'Pre Auction': Displays your pre-auction messages, typically the auction house terms and conditions. To change Pre-Auction Message, go to 'Tools - General tab - Settings and Defaults - Message Settings - Pre-Auction Messages/Terms and Conditions'.

Button - 'Standby': ALV displays the words 'Please Stand By'.

Button - 'Master:Off' / 'Master:On': Clicking this button selects one of the following:

- 'Master: On' - Information for the next Lot Number that is selected (clicked) in the Auction Lot Grid will be displayed on the ALV screen. The lot number is displayed in (ALV) 'Current Lot Number'.
- 'Master:Off' - Regardless of the selected auction lot (in the Auction Lot Grid), ALV continues to display only information on the (ALV) 'Current Lot Number', as seen in the turquoise box just above "Exit" button. To select another ALV Lot, simply click on 'Master:Off'; it will become 'Master:On'. Click on the new lot.

Be sure that the left-hand ALV button shows 'Master:On'. Then begin the sale by highlighting the next lot to be auctioned. (ALV) Current Lot Number follows whatever lot is currently highlighted (entries in 'Bid Quick Entry' will cause the entered lot to be displayed and highlighted in the Auction Lot Grid).

If a clerical mistake is made during data entry, click 'Master:On' so it becomes 'Master:Off'. Correct the mistake, then click 'Master:Off' again and continue with the sale. While 'Master' is 'Off', the (ALV) Current Lot Number remains with the last lot that had been selected.

RPM Tips & Tricks:

Audience Lot View Screen: Slide Show Extraordinaire!

3b. ALV: Automatic Mode, Controlled From Auctioneer Active Screen

Path: Auctions – Day of Auction tab – Auctioneer – Active

The screenshot shows the 'AuctionRPM - Version: 2.5 Build: 376 (frmMain)' window. The main area is titled 'Auctioneer Main Operations'. It features a table of auction lots with columns for Lot #, Short Description, and Consignor Name. Below the table is a 'Lot Changer' section with 'Previous Lot' and 'Next Lot' buttons. To the right of these buttons is a 'Current Lot Number' field showing '0' and a 'Set Current Lot' button. At the bottom of the window are 'Pre-Auction', 'StandBy', and 'Exit' buttons. Annotations with arrows point to the 'Auction Lot Grid', 'Lot Changer', 'Audience Lot View (ALV) Buttons', 'Previous Lot', 'Next Lot', 'Set Current Lot', and 'Current Lot Number'.

Lot #	Short Description	Consignor Name
1	1948 Henway	Billen and Lovett, Attorn
2	Genuine imitation pearl necklace	Billen and Lovett, Attorn
3	Leather belt 38", tooled	Sellers, Jim
4	Autographed picture of Myself	Consignor, George
4A	The Mummy - 45RPM single, Bob McFadden & Do	Billen and Lovett, Attorn

Very similar in function to 'Pre Lotted Bid Entry' screen, this screen has one added feature. It is set up to work with a 'touch-screen' monitor. In the 'Lot Changer' area, the auctioneer presses (touch screen) or clicks (mouse operation) either 'Previous Lot' or 'Next Lot'. The previous or next lot in the auction becomes highlighted (selected).

If lot information is to be projected on ALV, the 'Set Current Lot' button is pressed (touch screen) or clicked (mouse operation). (ALV) Current Lot Number changes to the now-selected lot. Selected lot images (and possibly descriptions) are projected from the ALV computer.

Both 'Pre-Auction' and 'Standby' buttons are available. Please refer to the section 3a, 'Pre Lotted Auction – Bid Entry', above, for information on these two buttons.

3c. ALV: Independent (Manual) Mode, Controlled From ALV Computer Keyboard

Path: Auctions – Day of Auction tab – Audience Lot View

Select the current auction number and size of image that is desired (Quarter Screen Picture Mode, Three Quarter Screen Picture Mode, Full Screen Picture Mode). See 'Background' at the beginning of this tutorial for explanation of these three options. Click 'Proceed'.

RPM Tips & Tricks:

Audience Lot View Screen: Slide Show Extraordinaire!

To enter 'Independent Mode', press any of the following keys:

<u>Key</u>	<u>Action</u>
D	Turn the description on or off. Applies only to the Quarter Screen mode.
F	Move to the first lot in the auction.
L	Move to the last lot in the auction.
N	Move to the next lot in the auction.
P	Move to the previous lot in the auction.
Q	Quit from the audience lot view screen.
R	Random. Displays images from the auction in random order. Good for pre-auction teaser.
S	Select the lot to display. Pressing this key will cause the program to pop up a screen that will ask for the new lot number to be entered. After entering the new lot number, press <enter>, and the new lot will then be displayed.
T	Toggle between the different display modes (Quarter/Three Quarter/Full Screen).
'+'	Speed up the scroll rate of the on-screen description.
'-'	Slow down the scroll rate of the on-screen description.

Pressing any of the above keys upon entering ALV will cause the screen to initially ask if you want to enter into independent mode. After entering independent mode, the screen will require you to use the above keystrokes to progress through the lots in the auction.

To leave ALV and return to AuctionRPM, type 'Q' (Quit).